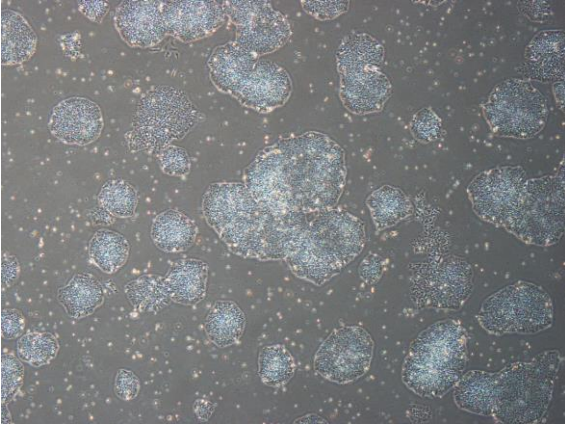


## 【 CiRA-j-1612 】 Morphology of iPSC colonies

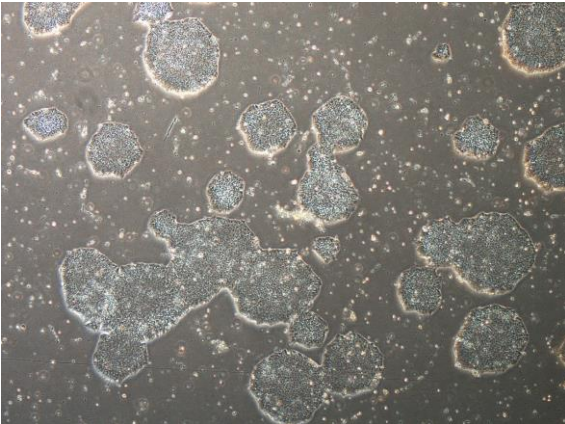
CiRA-j-1612-A: passage-3



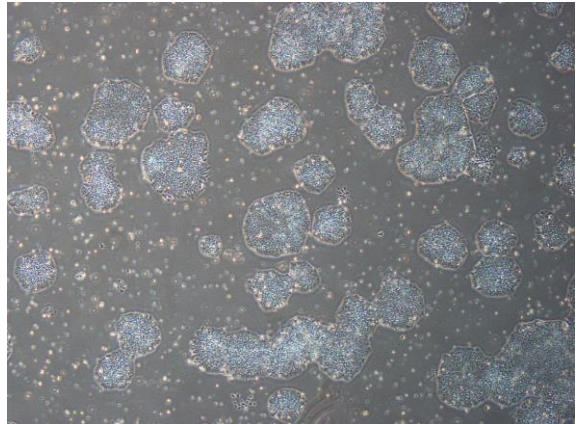
CiRA-j-1612-B: passage-3

**No photo**

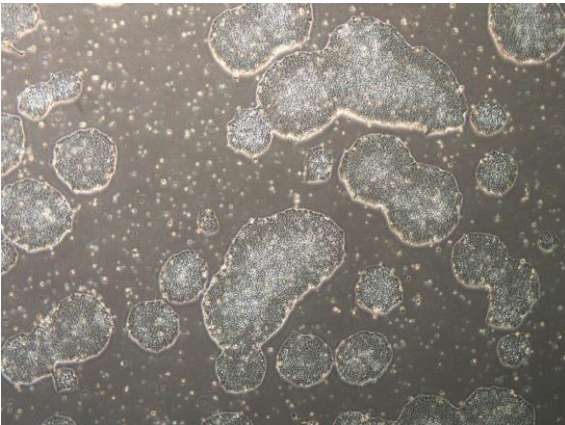
CiRA-j-1612-C: passage-3



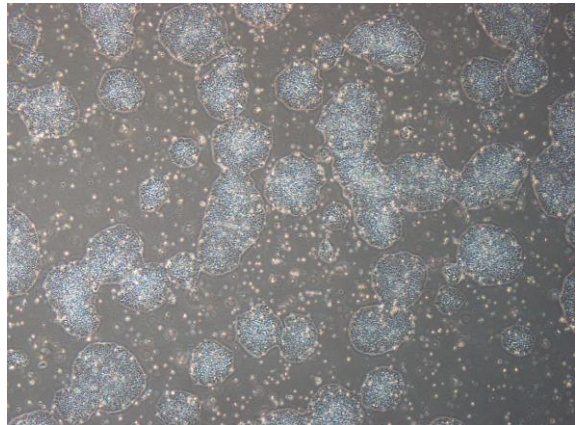
CiRA-j-1612-D: passage-3



CiRA-j-1612-E: passage-3



CiRA-j-1612-F: passage-3



( All images were captured at 4x magnification )